

HARLO®

12-FIVE ROUGH TERRAIN FORKLIFT - 4WD



HARLO – since 1958 – The Industry Leader in Rough Terrain Forklifts

Remarkable Quality and Manufacturing

The **12-FIVE** introduces **HARLO** into a larger capacity market. In addition to Agricultural applications, the performance of the unit can be utilized in construction, lumber/sawmill, forestry, metal, salvage yard, trucking, and rentals just to name a few.

Standard Options

When you want the fastest on the job site at **27.4 mph**, or utilizing our **generous 35 GPM main pump to lift at 96.3 fpm (15' 2 stage mast) and 144.4 fpm (22' 3 stage mast)**, multitasking with amazing agility at **11.2" of ground clearance**, **turning at an 11' radius**, **HARLO** is second to none! The internal wet brake and holding brake give stopping and holding power for all applications.

Exceptional Features

Smooth shifting is accomplished with our 4-speed manual transmission. Standard mast options of 15' two-stage and 22' three-stage lift your load with ease. The Cummins 74HP Diesel engine is low maintenance, fuel efficient, provides plenty of power, and has faster response times.

HP12500 Rough Terrain Forklift Specifications

Engine

Model	Cummins QSF3.8L
Type	Tier 4 Final Emission Certified
Cylinders	4 Cycle Turbocharged Diesel
Displacement	4
Fuel Injection	229 CID
Fuel	Bosch Electronic
Tank Capacity	Ultra Low Sulfur Diesel
Cooling	24 Gallons
Max Speed (eng)	Liquid Cooled
Idle Speed (eng)	2200 RPM
Horse Power	800 RPM
Maximum Torque	74 HP @ 2200 RPM
Water Pump Style	295 ft/lb @1300 RPM
Engine Oil	Integral
	SAE 15-W40



Mast

Forward Tilt	35 Degrees
Backward Tilt	10 Degrees
Side Shift	7.5" Total - 3.75" Left / 3.75" Right
Load Cushioning	Optional Accumulator

Tires

Front	19.5LR24
Rear	12R16.5

Mast Configurations

Lift Height	Carriage Type	Carriage Width	Stages	Lowered	Extended	Capacity @ 24" Load Center	4WD Weight
15' Roller	Notch ITA	60", 72", 84", 96"	2	125"	212"	12500lbs to 15'	18,900 lbs
22' Roller	Notch ITA	60", 72", 84", 96"	3	125"	300"	12500lbs to 12' 6000lbs to 22'	19,900 lbs

Electrical

Voltage	12 Volts
Alternator	135 Amps
Battery	2 @ 950 CCA
Power Plugs	12V (Single) USB (Dual)



Warning Lights

- Engine Oil Pressure - Transmission Oil
- Temperature - Air Cleaner Restriction
- Alternator Charge - Engine Water
- Temperature - Parking Brake
- Fuel Level - Engine Preheat

Audible Alarm

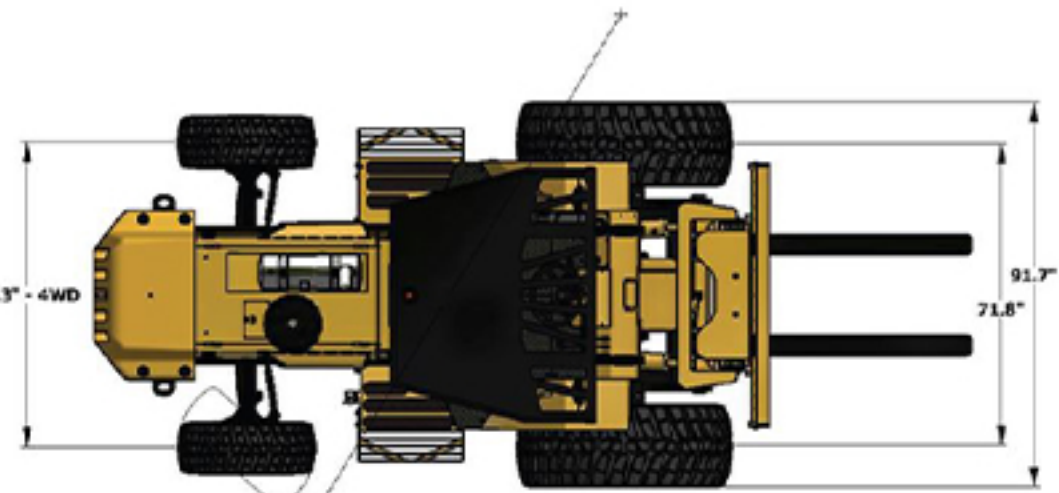
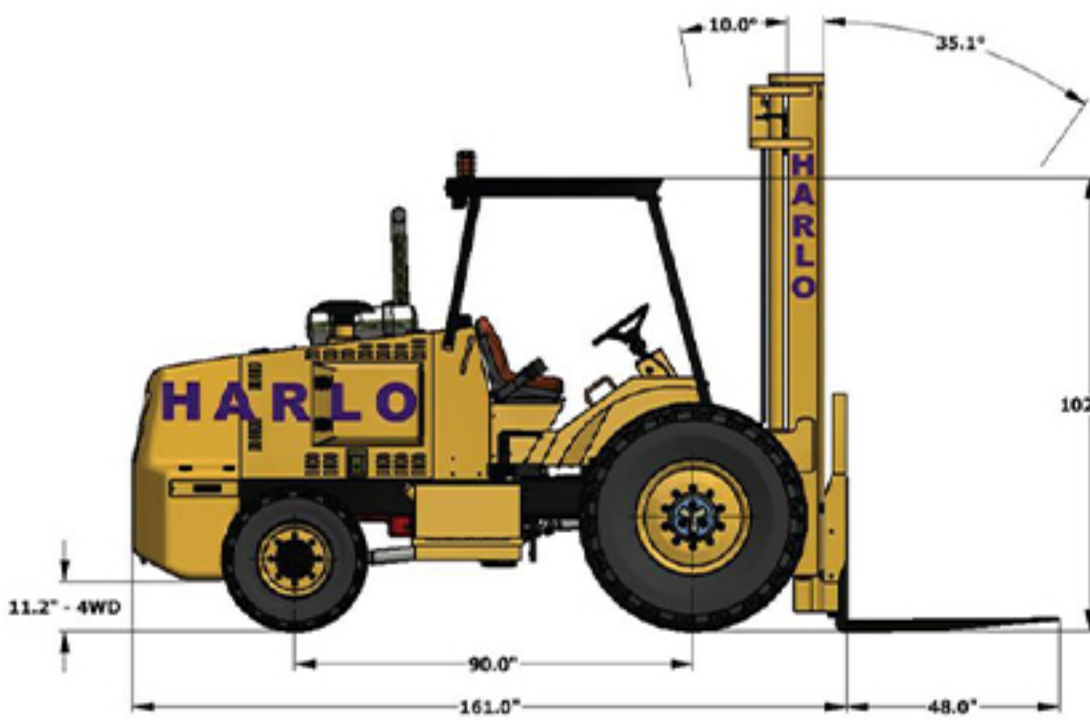
Backup Alarm - HORN

Operator Environment

Standard Safety: Adjustable Seat Cushion – Rear View Mirror – Seatbelt
– FOP Overhead Guard – See-thru Mast – A.N.S.I. B56.6 Safety Compliant

Gauges

Fuel Level – Hour Meter – Voltmeter – Coolant Temperature



Turning Radius
 4WD with brakes 11'-0"
 4WD without brakes 13'-1"

Dual Battery



Bin Clamp



LED Light Guards



Engine Air PreCleaner



Accumulator



Swivel / Suspension Seat



4 Forks



Integrated Fork Positioner



Turn Signal Package



Fire Extinguisher



Enclosed Cab



Air Conditioner



Cab Heater



Radio



Engine Block Heater



Harlo.com



Harlo Facebook

